

## Table of Contents

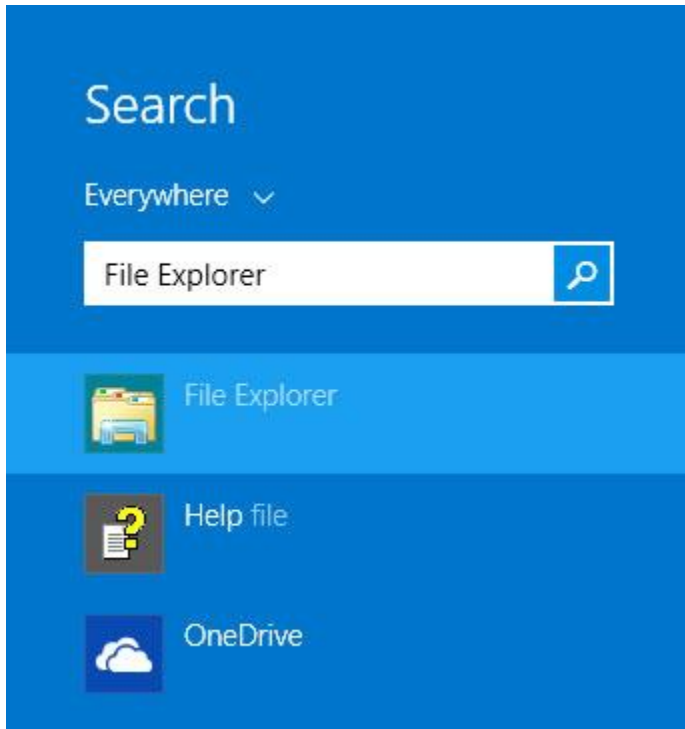
1. <b>Table of Contents</b> .....	1
2. <b>Requirements</b> .....	1
3. <b>Search</b> .....	2
4. <b>Hard Drive</b> .....	3
5. <b>EcuTeK Folder</b> .....	4
6. <b>Log File</b> .....	5
7. <b>Programming Policy</b> .....	6

## Requirements

1. Windows 7 or higher compatible Laptop
2. Laptop with Bluetooth compatibility

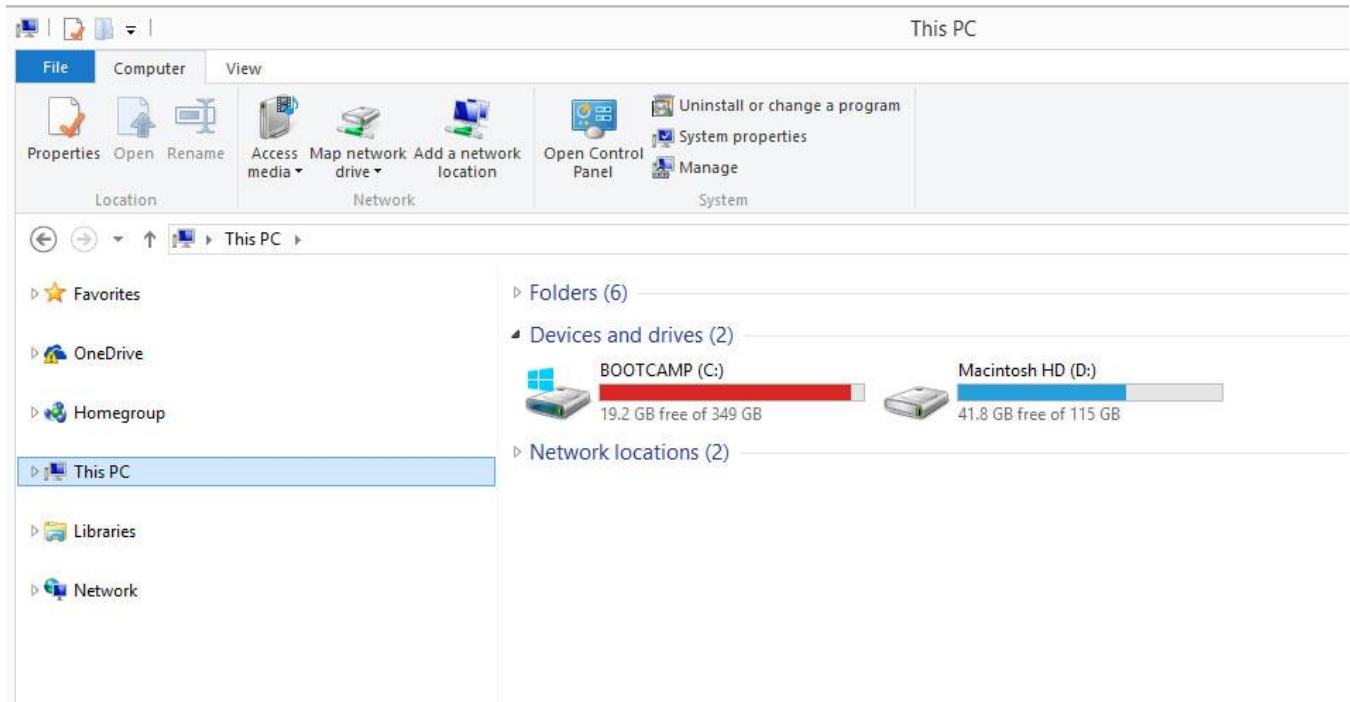
## Search

1. Open the search utility in Windows
2. Search for "File Explorer"
3. Open "File Explorer"



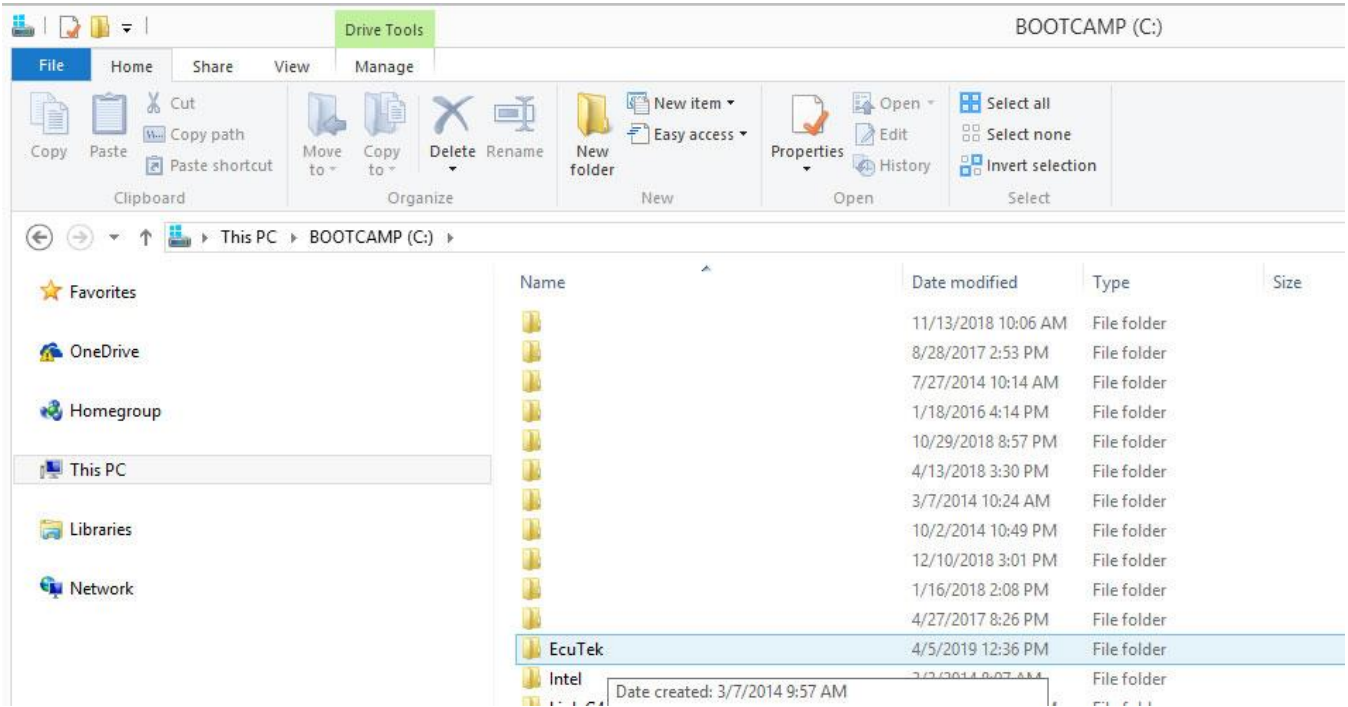
## Hard Drive

1. Within "File Explorer" goto "This PC"
2. Select and open the "C:" drive.



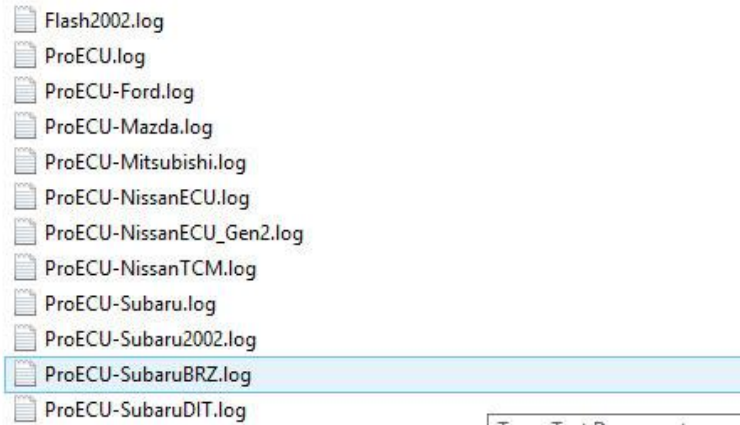
### EcuTeK Folder

1. Look in the list of folders for the EcuTeK Folder
2. Double click the EcuTeK folder to open it.



**Log File**

1. Look for the "ProECU-SubaruBRZ.log" file
2. Copy/Attach the file to an email to [sales@delicioustuning.com](mailto:sales@delicioustuning.com)
3. Email us that file along with your Order #



- Flash2002.log
- ProECU.log
- ProECU-Ford.log
- ProECU-Mazda.log
- ProECU-Mitsubishi.log
- ProECU-NissanECU.log
- ProECU-NissanECU\_Gen2.log
- ProECU-NissanTCM.log
- ProECU-Subaru.log
- ProECU-Subaru2002.log
- ProECU-SubaruBRZ.log**
- ProECU-SubaruDIT.log

**PROGRAMMING POLICY; RESULTS NOT GUARANTEED**

Results are not guaranteed for Installation Services and Programming Services. Any horsepower estimates are believed to be accurate based on the best information available at the time the estimates are made, however they are subject to the efficiency of individual automobile engines and transmissions, and may be adversely affected by the intake system, turbochargers, suspensions, O2 sensors, the exhaust system, other performance products, programming devices, among other variables outside of the control of DT. For example, an important part of having my automobile tuned is to be sure that the intake tract is free of leaks both when in positive boost pressure and under engine vacuum. The vast majority of modern day cars use an extremely sensitive mass airflow sensor which can be thrown off by these leaks.

DT cannot be responsible for variation in the actual power output of automobiles from DT's representative results—even where the power output is adversely affected by performance products or programming devices serviced or programmed by DT.

Programming of electronic devices is a highly sensitive science. DT cannot be responsible for my actions regarding fuel quality, maintenance, driving use or abuse, or other such factors. Therefore, DT is not responsible for direct or consequential damages to my automobile or engine from driving after the Diagnostic Testing and Programming Services.