

V3 DATA LOGGING

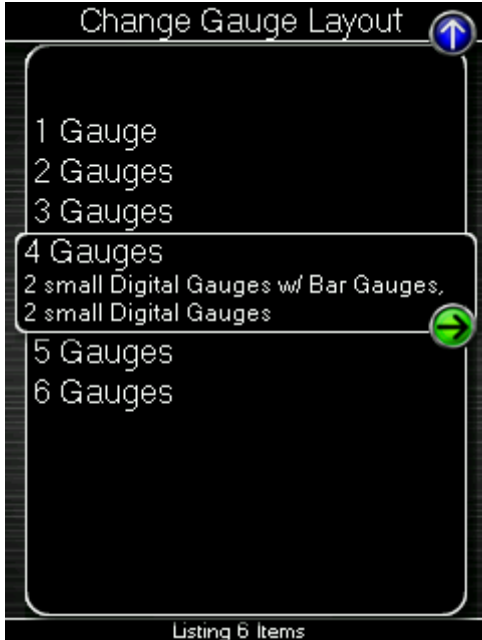
WHAT IT DOES

This feature allows logging of data monitor values to a file for later evaluation.

HOW TO USE IT

FIRST TIME YOU USE DATA LOGGING/MONITORS

The first time a V3 Accessport enters the Datalogging/Monitors menu, the user will be asked how many monitors they would like to display.

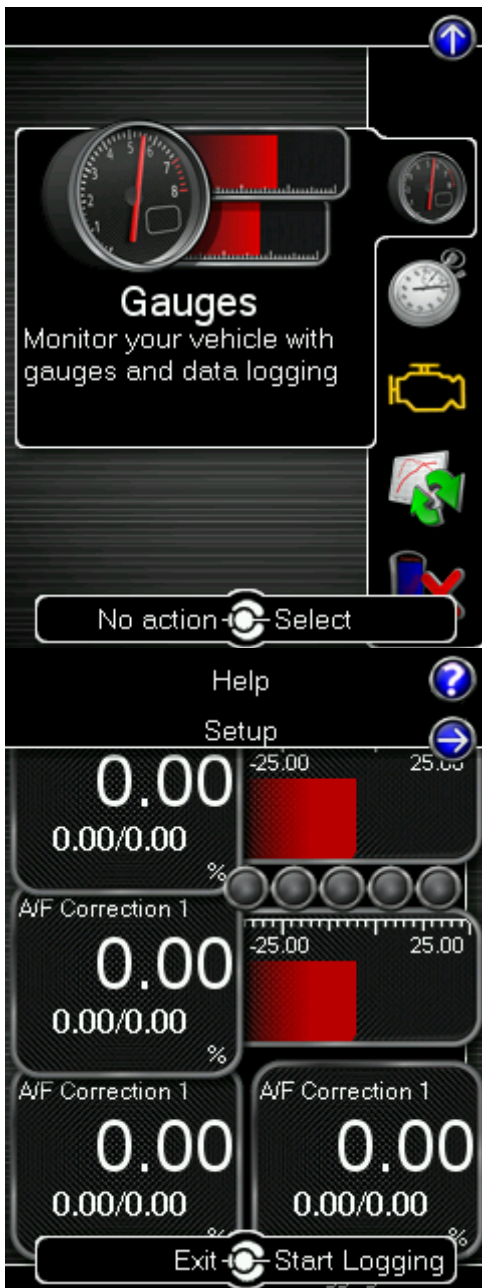


Each time the user returns to the "Gauges" menu, the selected layout/number of gauges will be used until it is changed in the "Gauges Setup menu".

TO CONFIGURE

All Accessports will include a set of default monitors for data logging. If the user wishes to alter the default list, follow these steps:

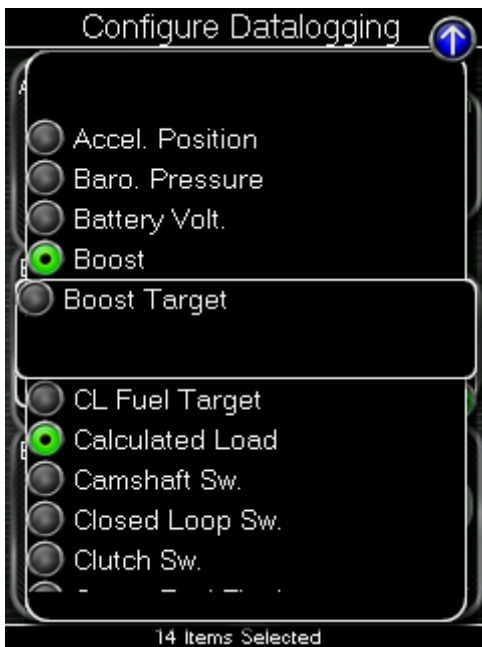
- Enter the “Gauges” menu.



- Enter the datalogging/gauges setup menu by selecting the arrow at the top of the gauges screen, then enter the “Configure Datalogging” menu.



- Once in the "Configure Datalogging" menu select the monitors you would like to log.



- Once you have selected the monitors you wish to log, press the cancel button to save.

TO USE

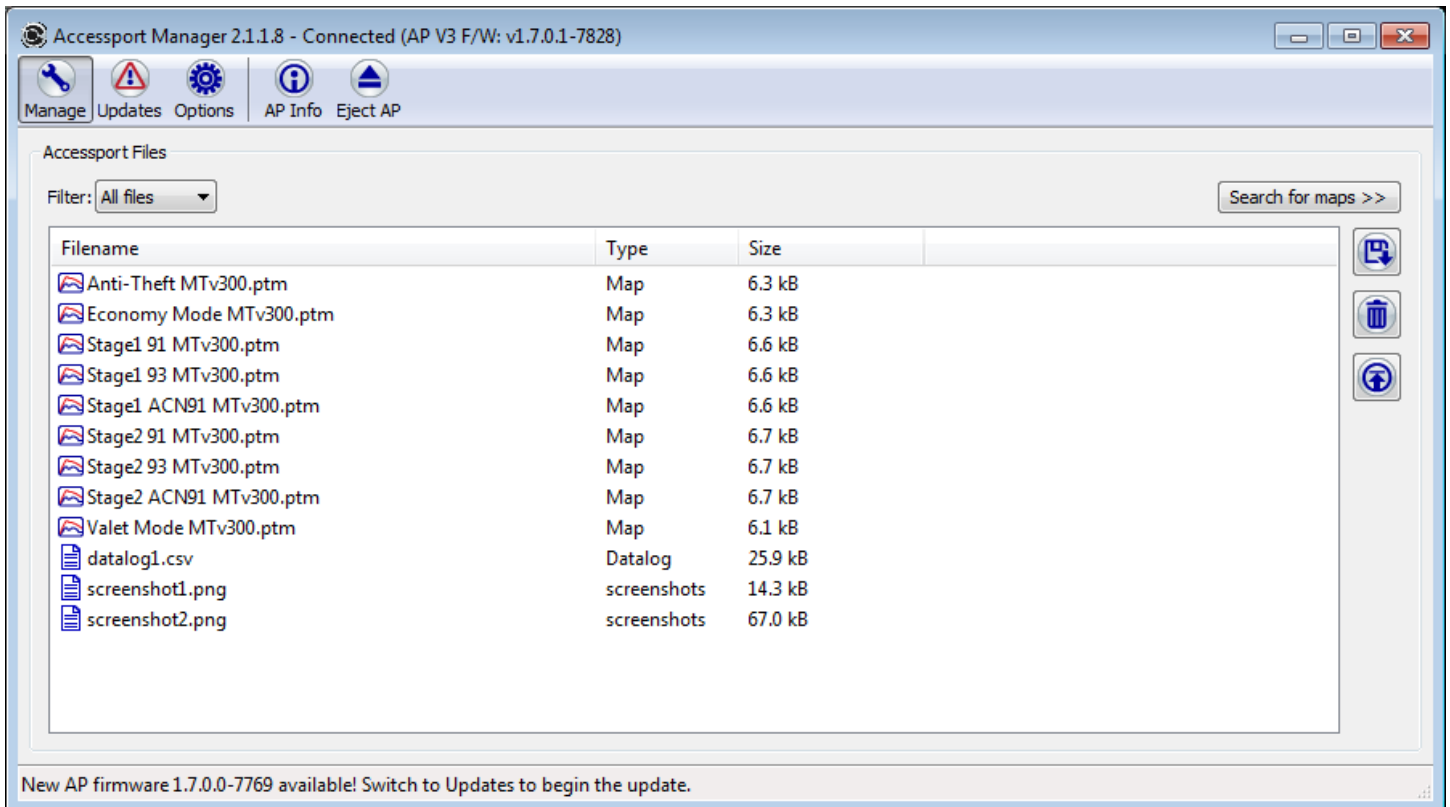
- Enter the Gauges menu



- Press the OK button to start datalogging. Once started, a scrolling dot will appear on the screen along with the logging rate displayed at the bottom.



- Press the OK button or Cancel button to stop datalogging.
- Connect the Accessport to the Accessport Manager on your computer and download the catalog files in the “Manage” tab. Up to ten (10) datalogs can be stored on the Accessport at any time. The lowest number is the oldest log and the highest number is the newest.



- Open the datalog in any spreadsheet application. For most applications, double-clicking on the datalog will open the file properly.

datalog1.csv - OpenOffice.org Calc

10 B I U

A1 = Seconds (sec)

	A	B	C	D	E
1	Seconds (sec)	RPM (RPM)	Calculated Load (load)	Dyn. Adv. Mult. (DAM)	Ignition A
2	0	1338	0.27	16	
3	0.23	1327	0.27	16	
4	0.43	1342	0.27	16	
5	0.68	1339	0.28	16	
6	0.94	1325	0.29	16	
7	1.16	1342	0.42	16	
8	1.42	1381	0.45	16	
9	1.64	1400	0.46	16	
10	1.9	1412	0.46	16	
11	2.13	1442	0.46	16	
12	2.33	1462	0.48	16	
13	2.56	1487	0.48	16	
14	2.76	1531	0.48	16	
15	2.98	1556	0.49	16	
16	3.19	1582	0.5	16	
17	3.45	1622	0.51	16	
18	3.65	1662	0.52	16	
19	3.92	1700	0.53	16	
20	4.12	1730	0.54	16	
21	4.33	1774	0.55	16	
22	4.6	1811	0.56	16	
23	4.8	1849	0.57	16	
24	5.01	1878	0.56	16	

Sheet1

Sheet 1 / 1 Default STD Sum=0 100%

HOME

THE COBB WAY

COMPANY

DYNO DATABASE

SUPPORT

COBB U

CAREERS

CONTACT

#COBBTUNING

MILITARY DISCOUNT

VOLKSWAGEN

SUBARU

PORSCHE

NISSAN

MITSUBISHI

MAZDA

FORD

BMW

© 2017 COBB TUNING PRODUCTS LLC. ALL RIGHTS RESERVED.

▶ SIGNUP TO KEEP INFORMED OF SPECIAL EVENTS, DEALS, OR PRODUCT UPDATES.