

V2 DATA LOGGING

WHAT IT DOES

Allows logging of data monitor values to a file for later evaluation.

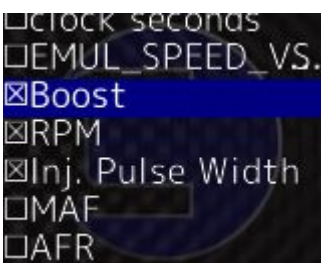
HOW TO USE IT TO CONFIGURE

All Accessports will include a set of default monitors for datalogging. If the user wishes to alter the default list, follow these steps:

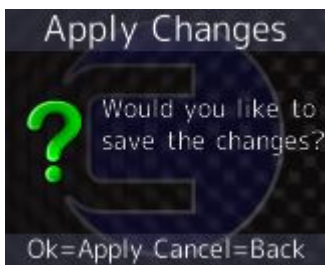
- Select “Monitor” | “Set Data Log List”



- Select/deselect monitors to datalog.



- Press the Cancel button to exit. A prompt is shown to confirm or cancel changes.



TO USE

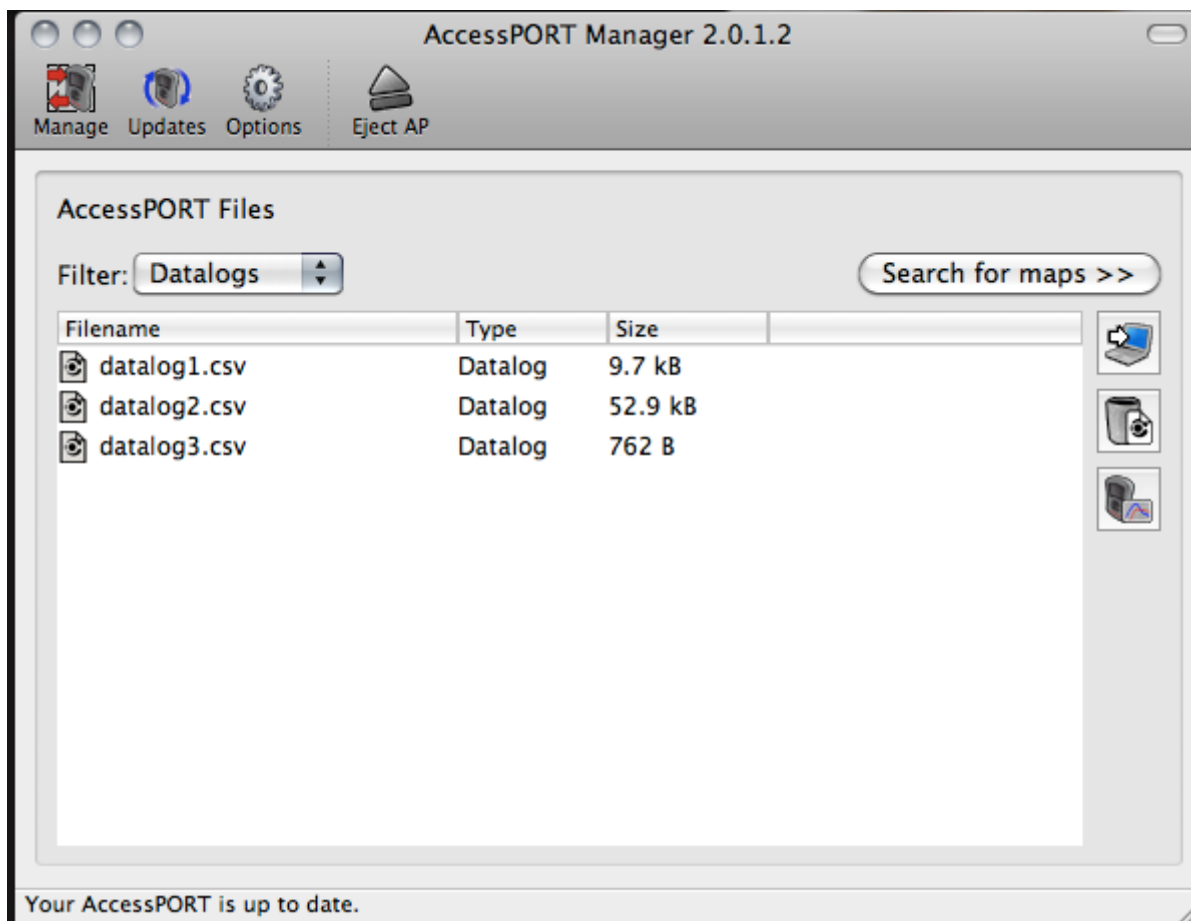
- Select "Monitor" | "Data Log"



- Press the OK button to start datalogging.



- Press the OK button or Cancel button to stop datalogging.
- Connect the Accessport to the Accessport Manager on your computer and download the catalog files in the Manage tab. Up to ten (10) datalogs can be stored on the Accessport at any time. The lowest number is the oldest datalog and the highest number is the newest datalog.



- Open the datalog in any spreadsheet application. For most applications, double-clicking on the datalog will open the file properly.

datalog1.csv - OpenOffice.org Calc

10 B I U

A1 = Seconds (sec)

	A	B	C	D	E
1	Seconds (sec)	RPM (RPM)	Calculated Load (load)	Dyn. Adv. Mult. (DAM)	Ignition A
2	0	1338	0.27	16	
3	0.23	1327	0.27	16	
4	0.43	1342	0.27	16	
5	0.68	1339	0.28	16	
6	0.94	1325	0.29	16	
7	1.16	1342	0.42	16	
8	1.42	1381	0.45	16	
9	1.64	1400	0.46	16	
10	1.9	1412	0.46	16	
11	2.13	1442	0.46	16	
12	2.33	1462	0.48	16	
13	2.56	1487	0.48	16	
14	2.76	1531	0.48	16	
15	2.98	1556	0.49	16	
16	3.19	1582	0.5	16	
17	3.45	1622	0.51	16	
18	3.65	1662	0.52	16	
19	3.92	1700	0.53	16	
20	4.12	1730	0.54	16	
21	4.33	1774	0.55	16	
22	4.6	1811	0.56	16	
23	4.8	1849	0.57	16	
24	5.01	1878	0.56	16	

Sheet1

Sheet 1 / 1 Default STD Sum=0 100%

HOME

THE COBB WAY

COMPANY

DYNO DATABASE

SUPPORT

COBB U

CAREERS

CONTACT

#COBBTUNING

MILITARY DISCOUNT

VOLKSWAGEN

SUBARU

PORSCHE

NISSAN

MITSUBISHI

MAZDA

FORD

BMW

© 2017 COBB TUNING PRODUCTS LLC. ALL RIGHTS RESERVED.

▶ SIGNUP TO KEEP INFORMED OF SPECIAL EVENTS, DEALS, OR PRODUCT UPDATES.